

American Sign Language (ASL) is a complete, natural language that has the same linguistic properties as spoken languages, with grammar that differs from English. ASL is expressed by movements of the hands. It is the primary language of many North Americans who are deaf and hard of hearing and is used by some hearing people as well.

ASL1

ASL Words / Phrases



drink eat help
thank you bathroom
want open

ASL2

ASL Words / Phrases



morning night sad
ask happy
drink
understand eat

ASL3

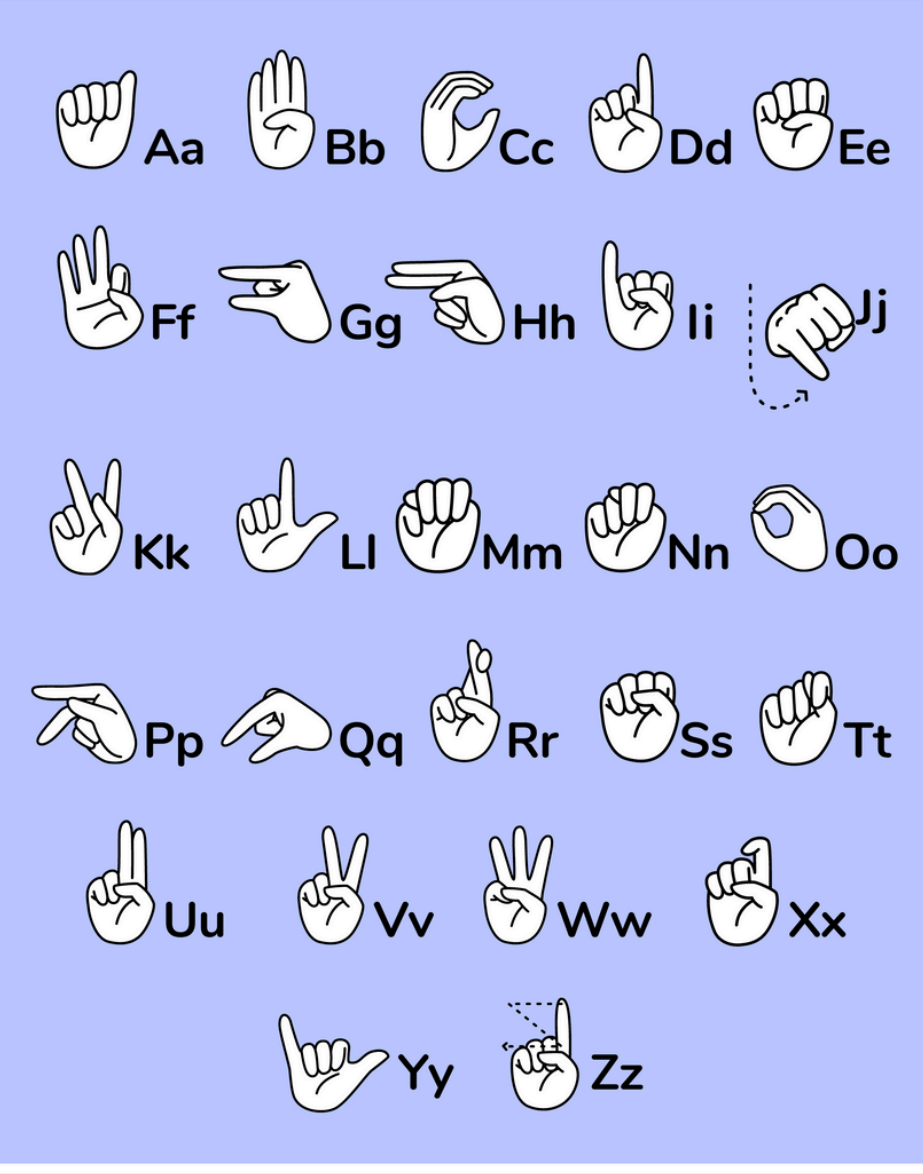
ASL Words / Phrases



please stop I love you
more yes
help
no clean

ASL4

ASL Alphabet



Aa Bb Cc Dd Ee
Ff Gg Hh Ii Jj
Kk Ll Mm Nn Oo
Pp Qq Rr Ss Tt
Uu Vv Ww Xx
Yy Zz

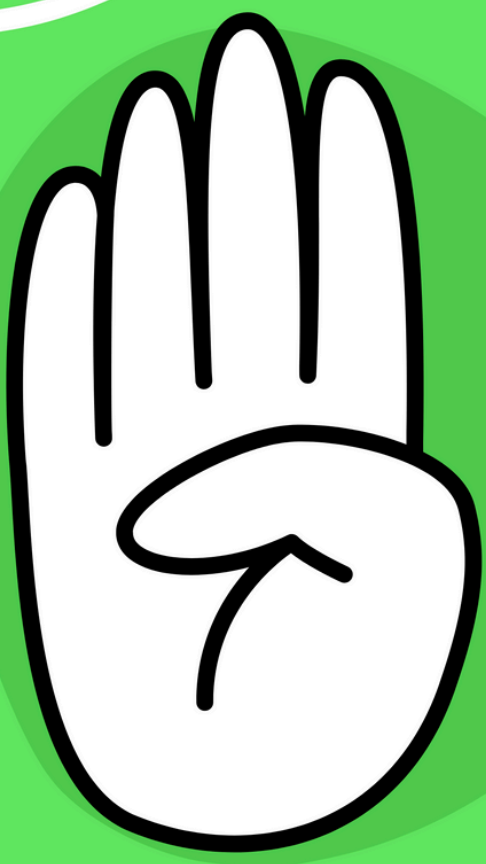
ASL5

A




ASL6

B




ASL7

C

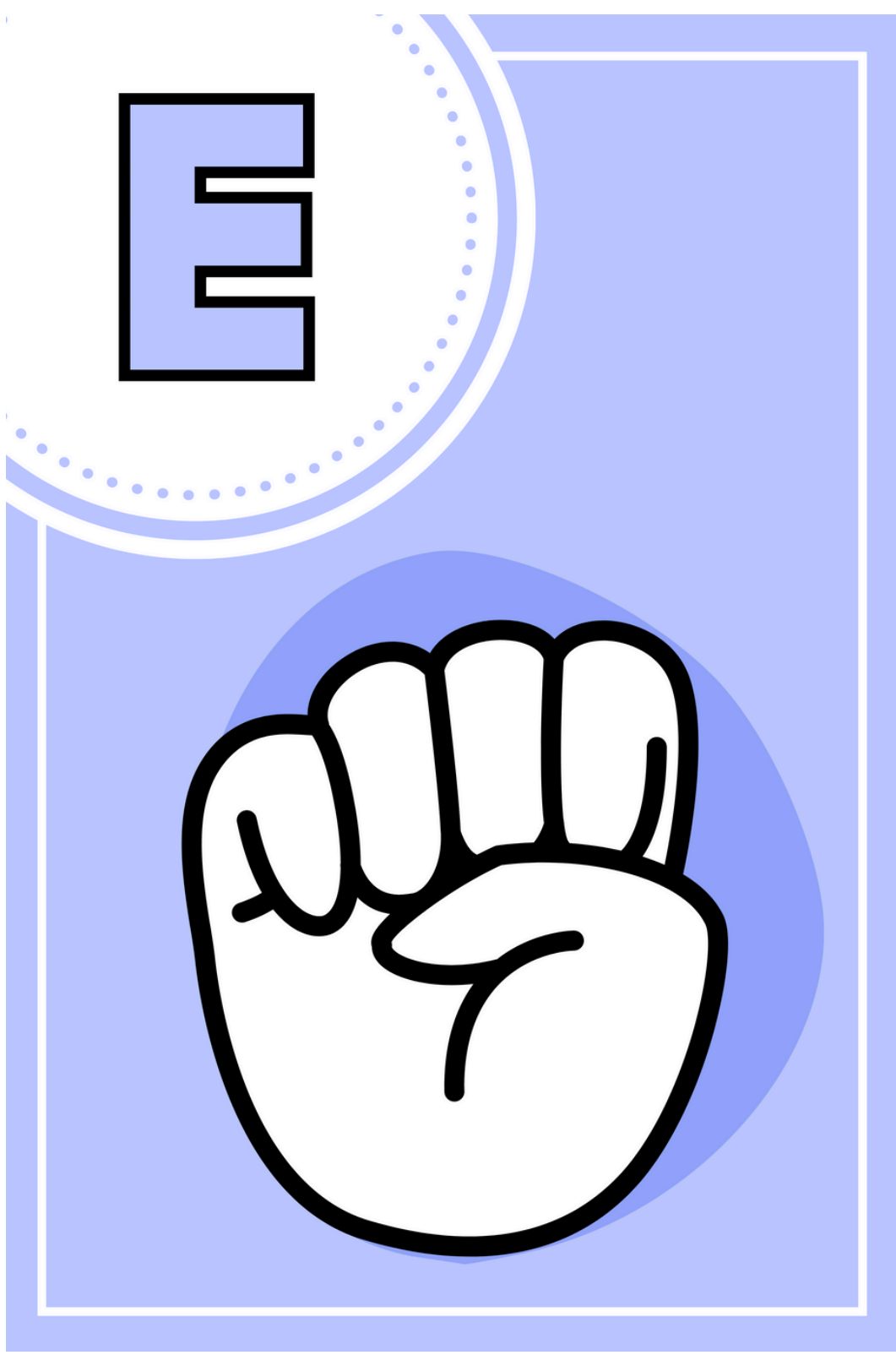


ASL8

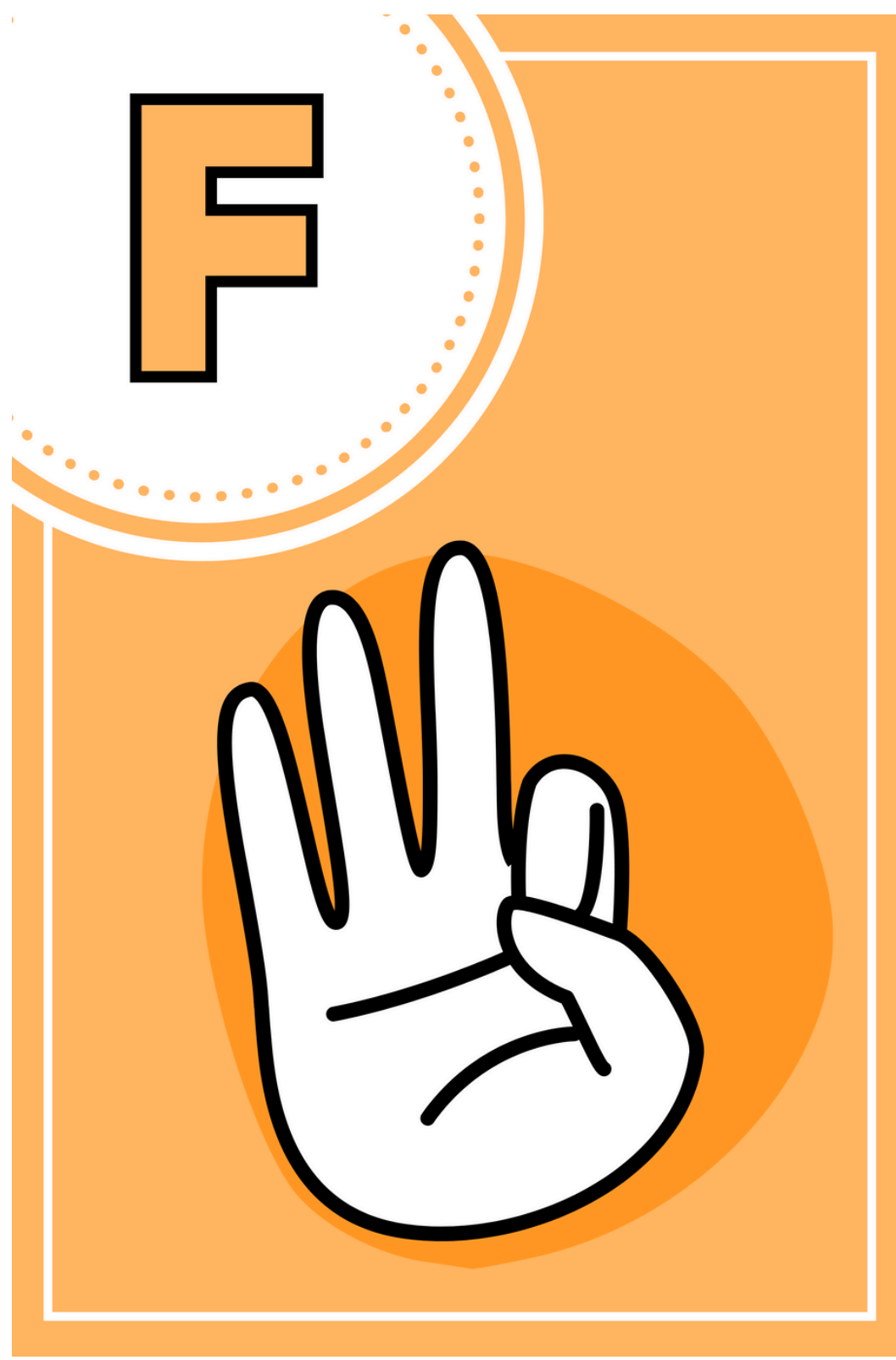
D



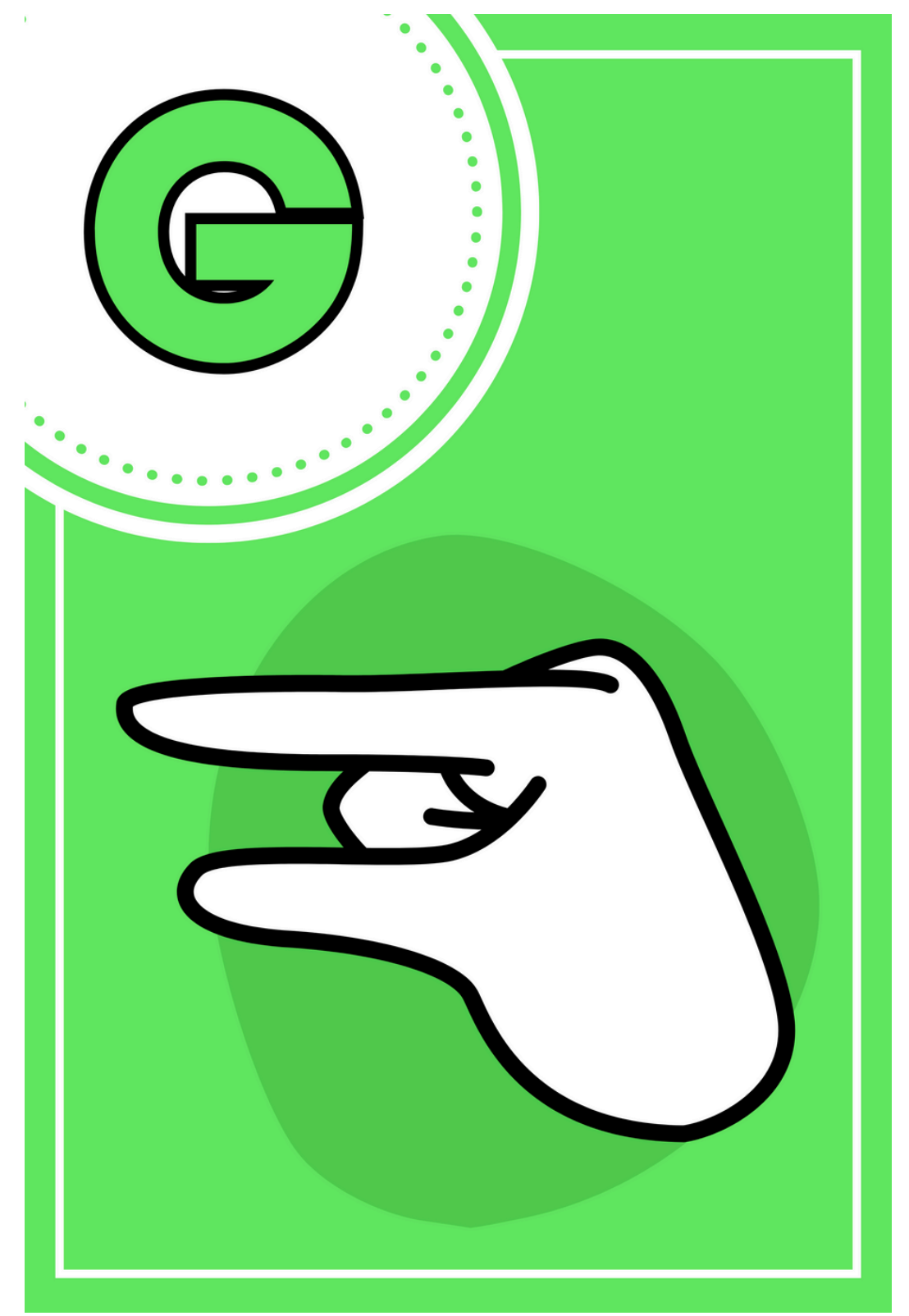
ASL9



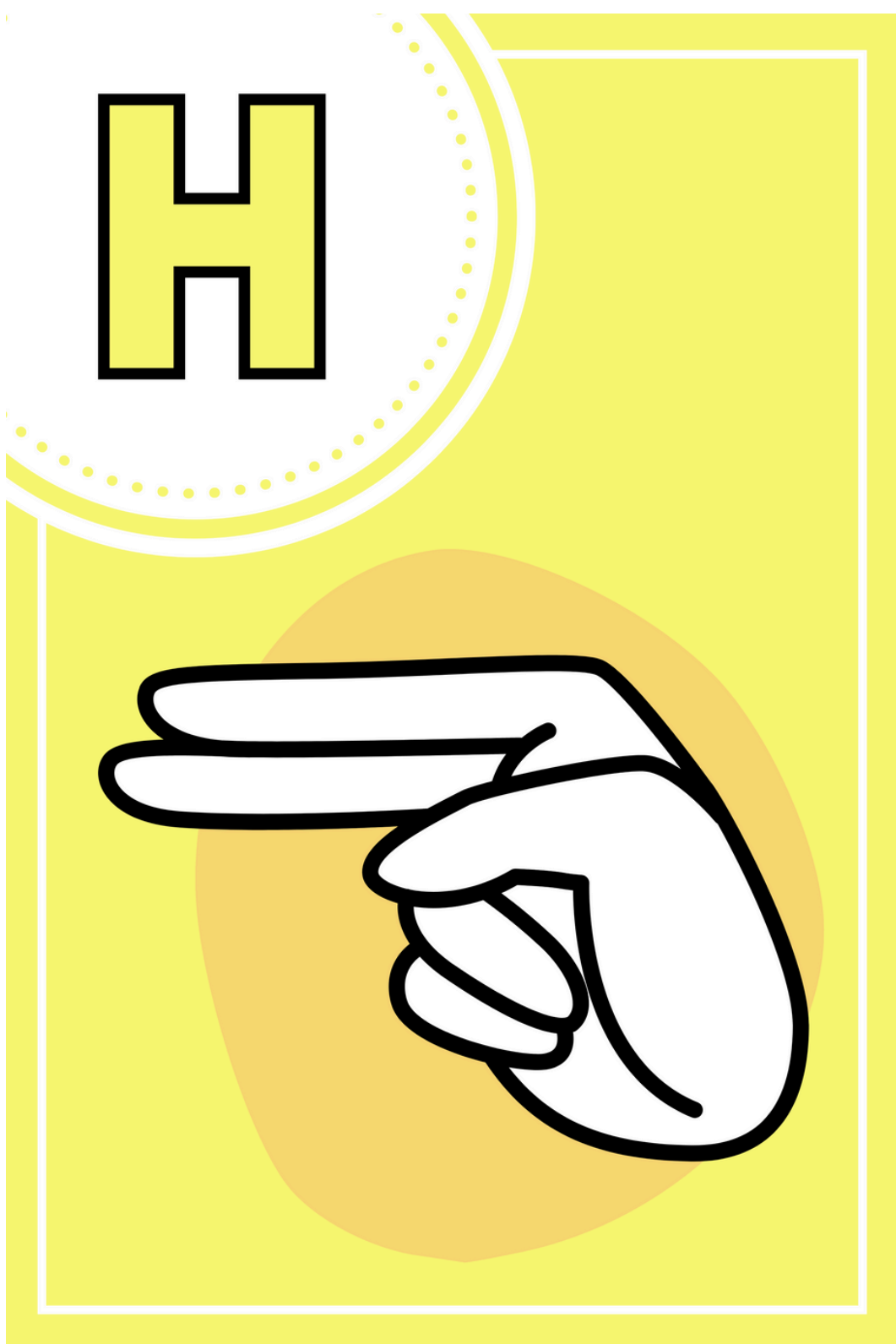
ASL10



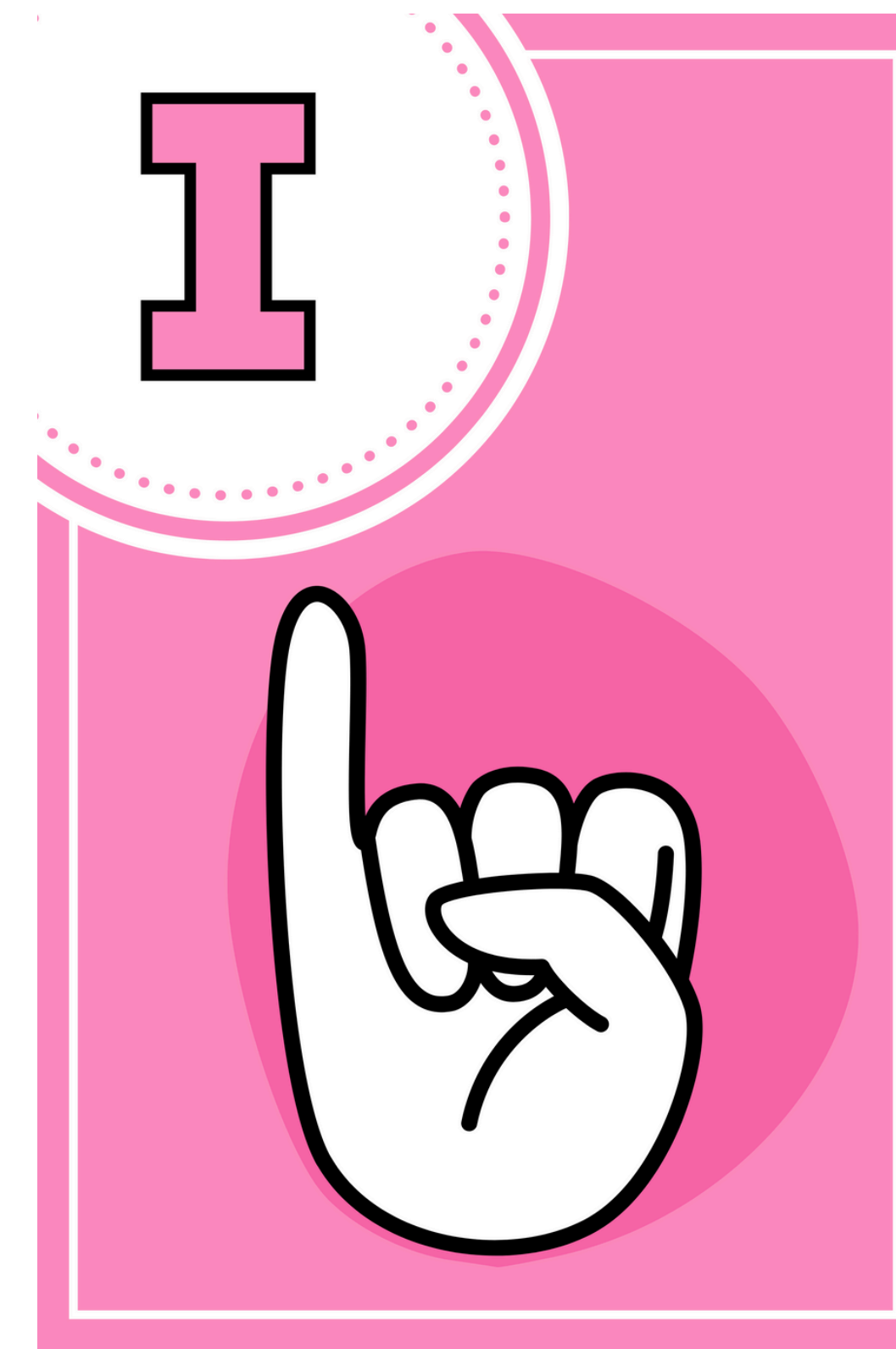
ASL11



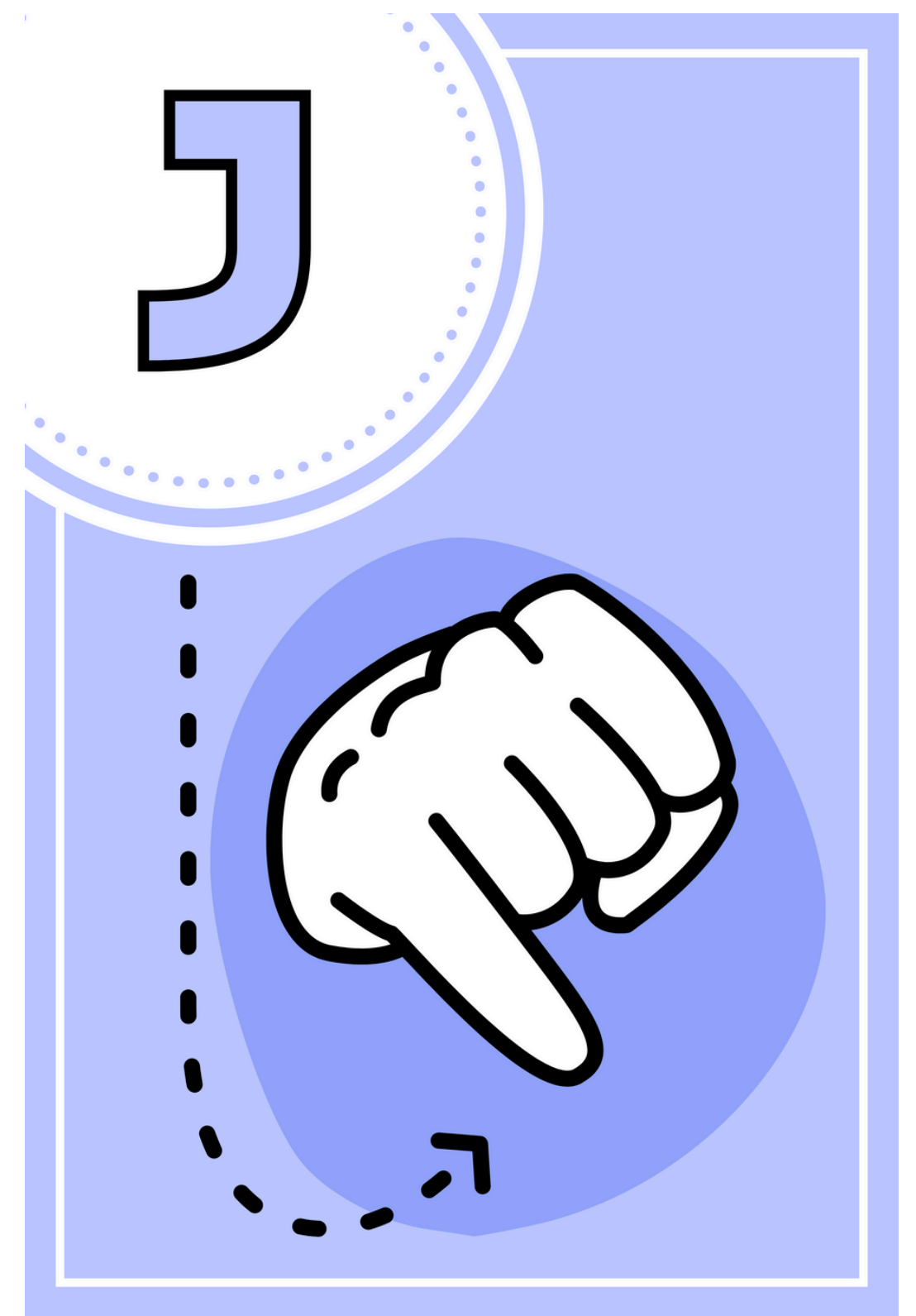
ASL12



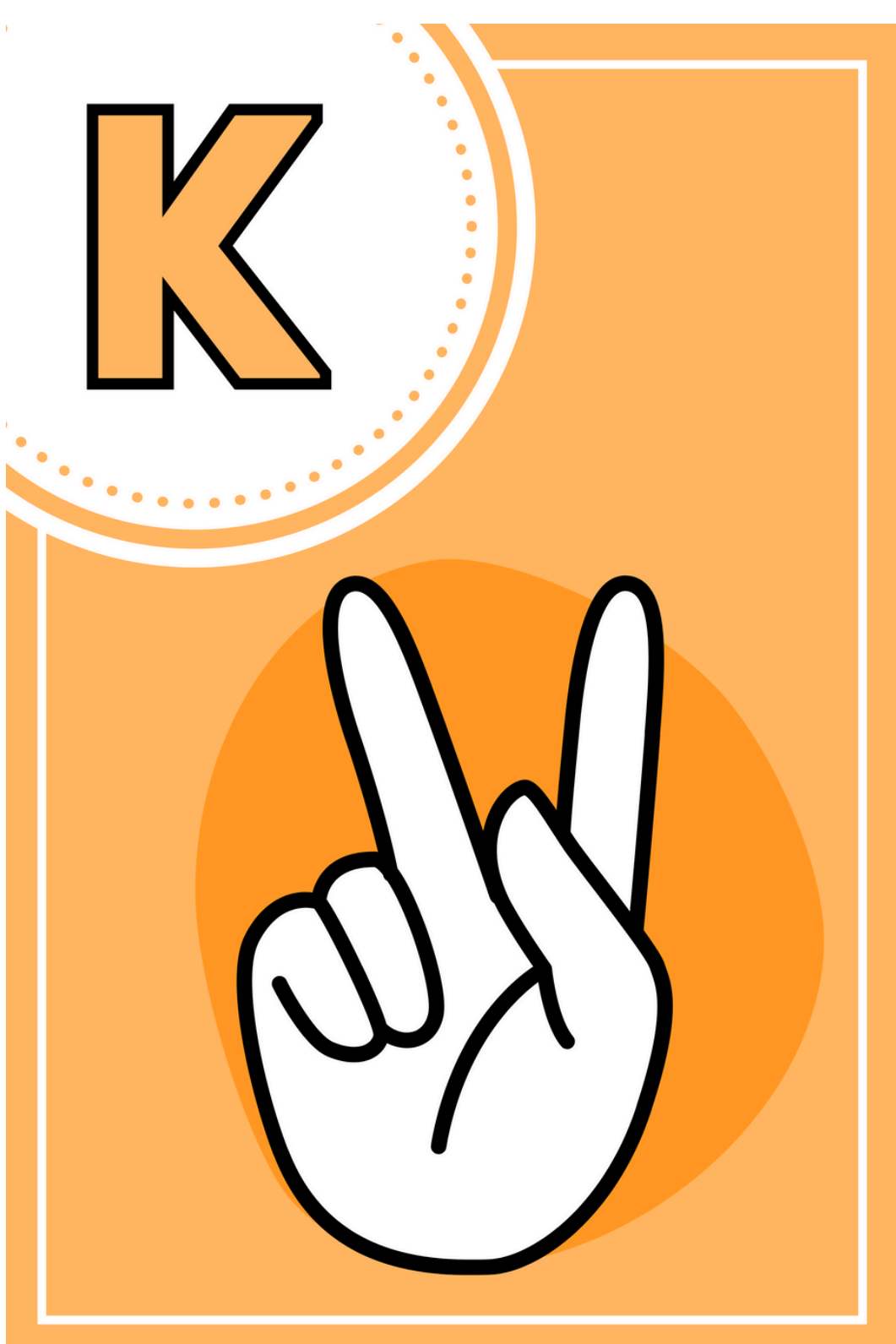
ASL13



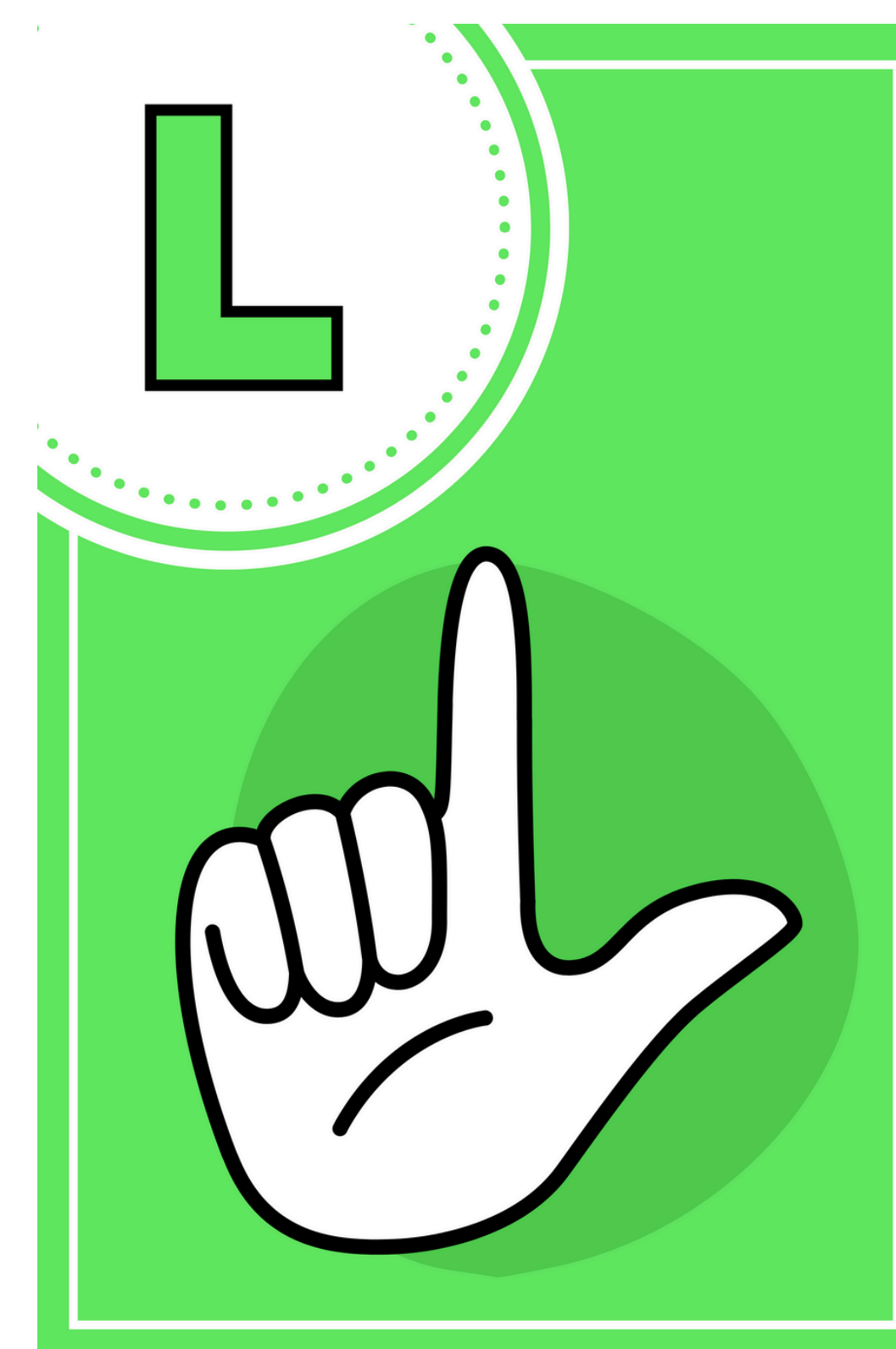
ASL14



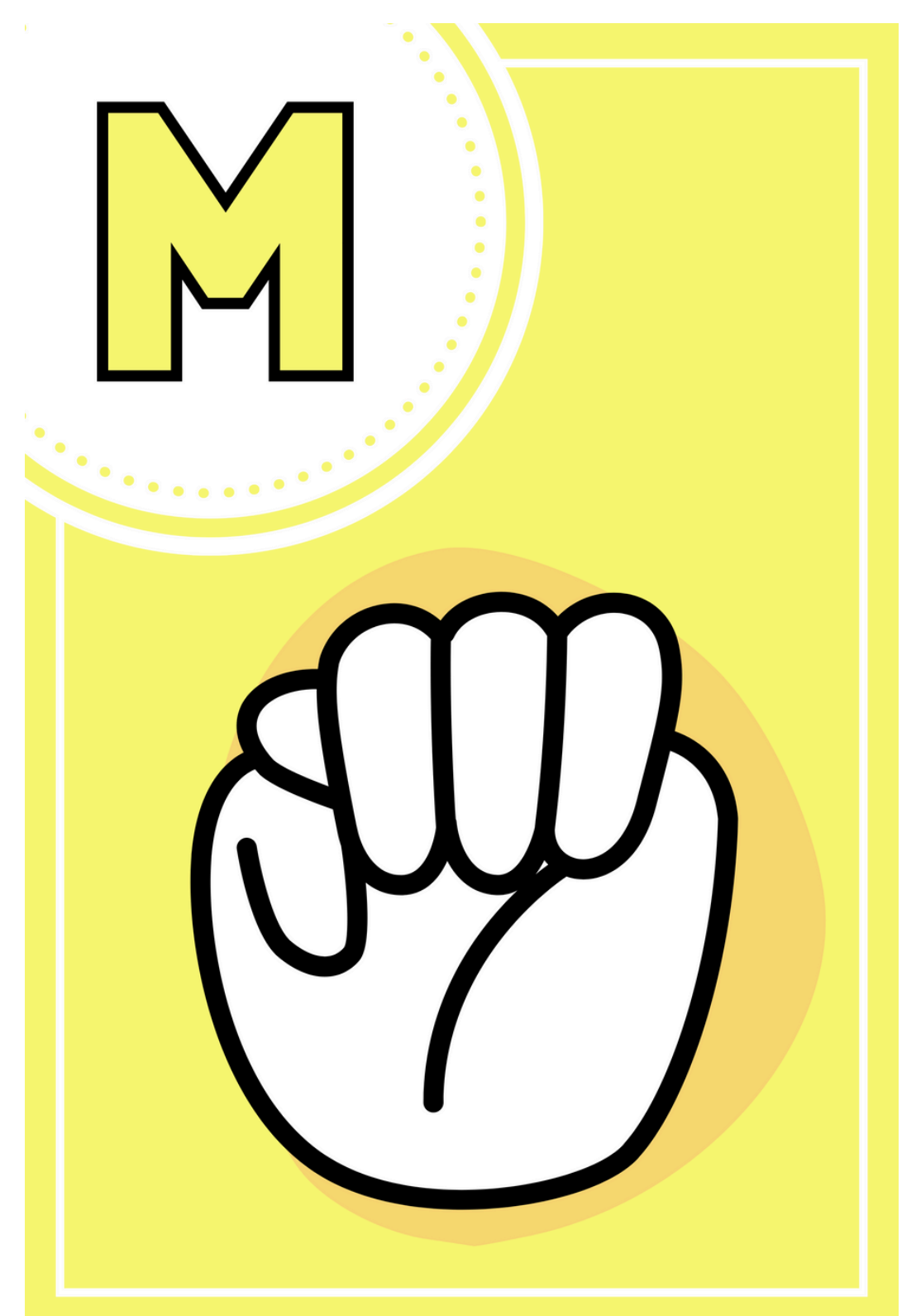
ASL15



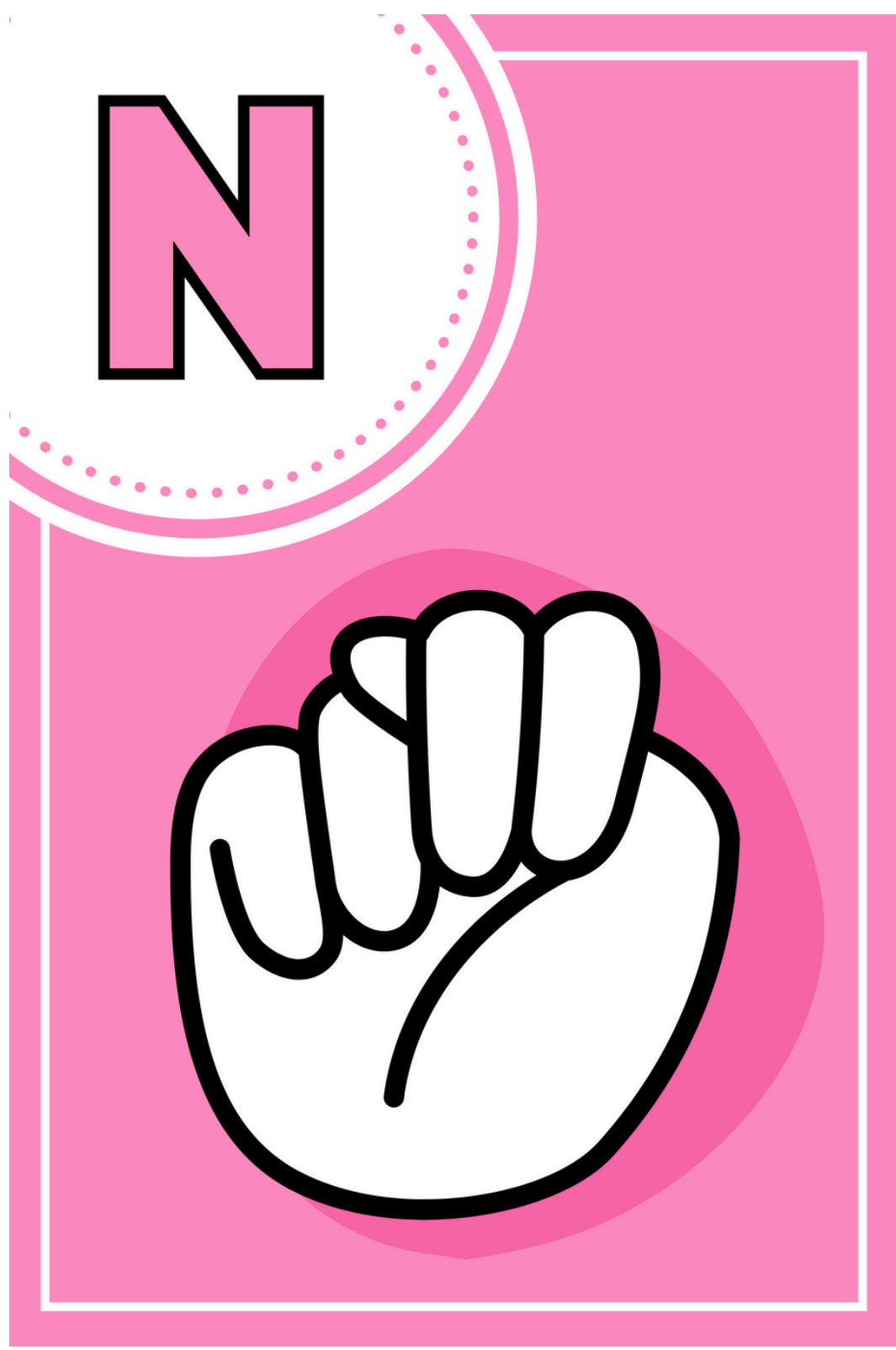
ASL16



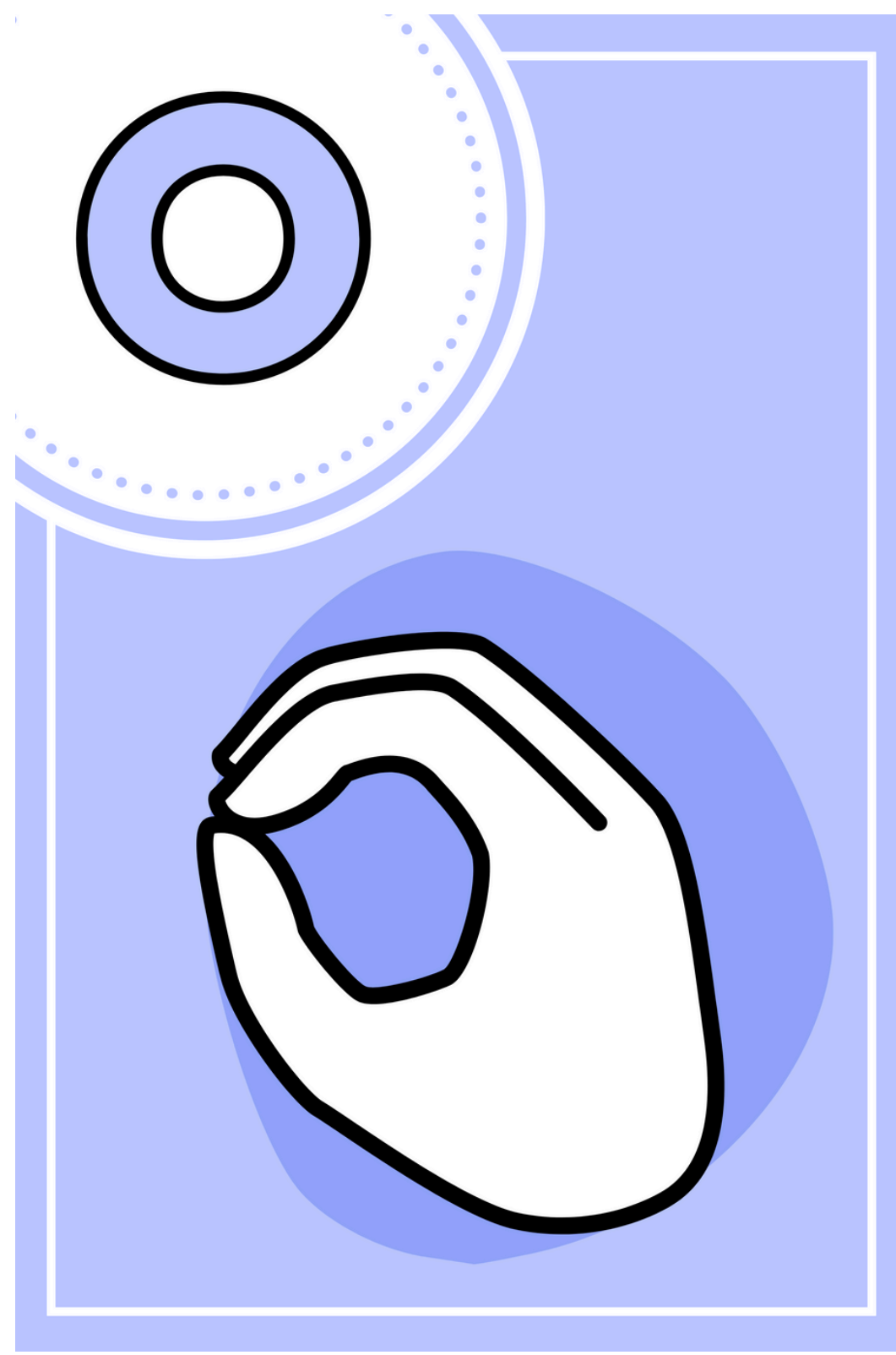
ASL17



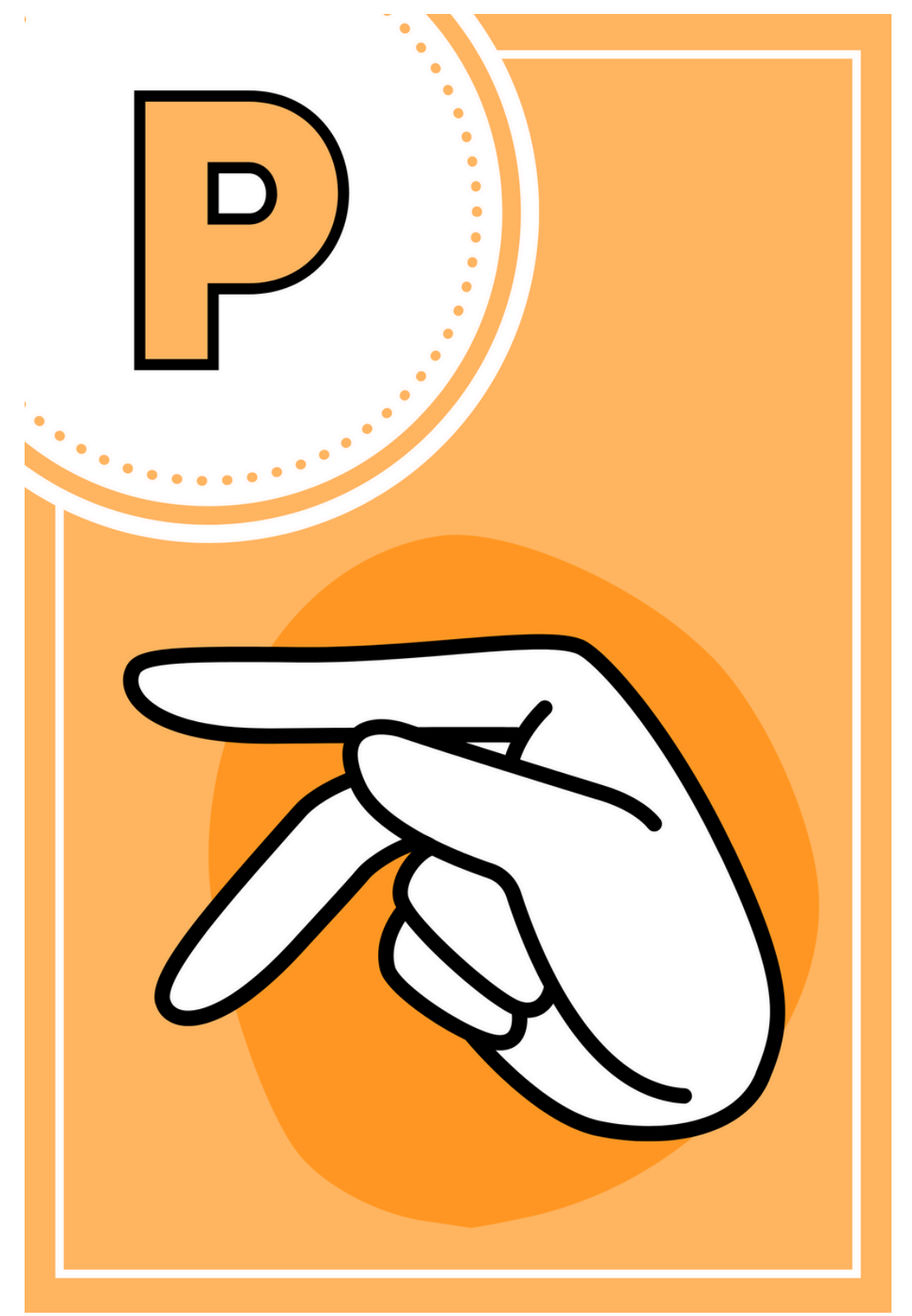
ASL18



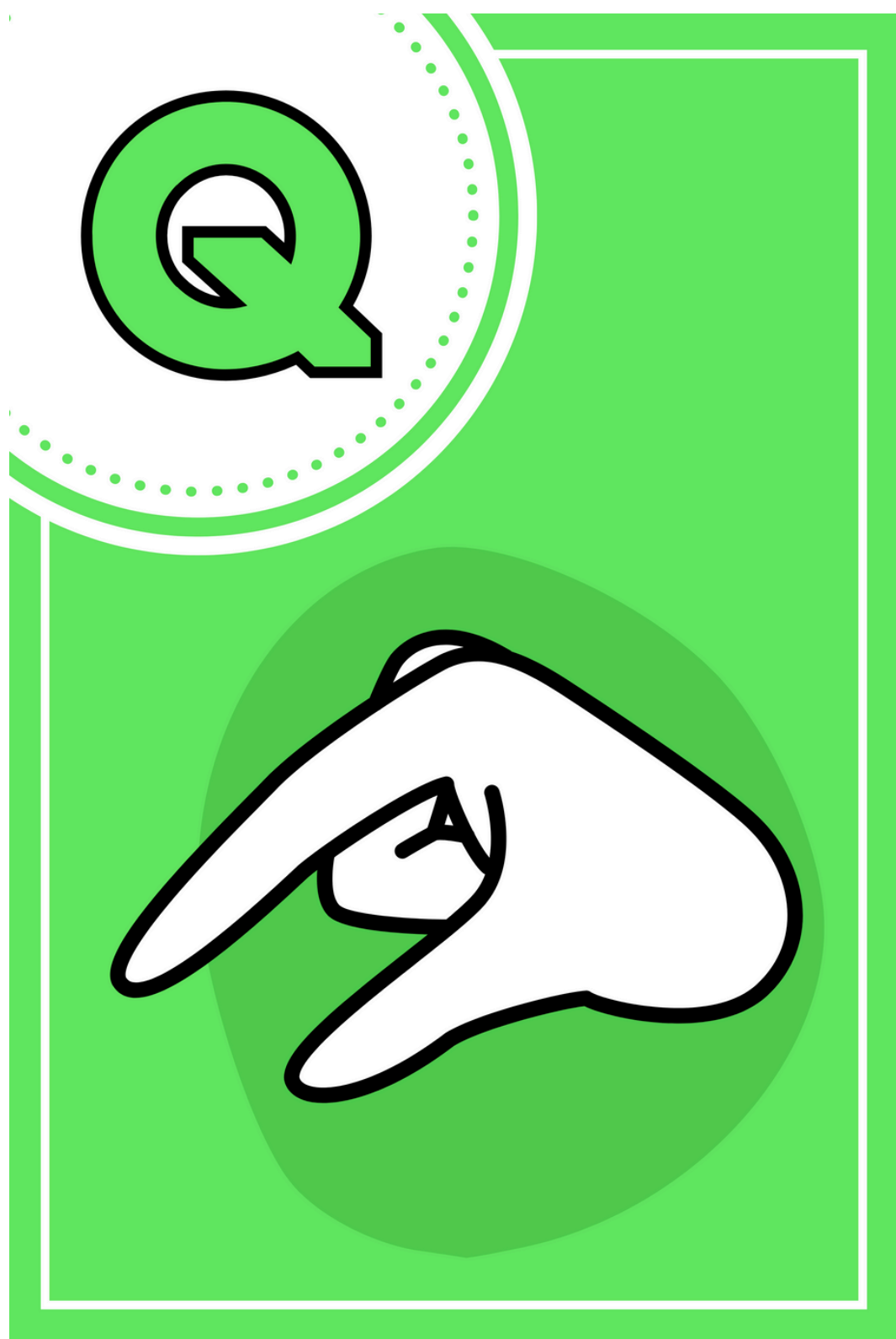
ASL19



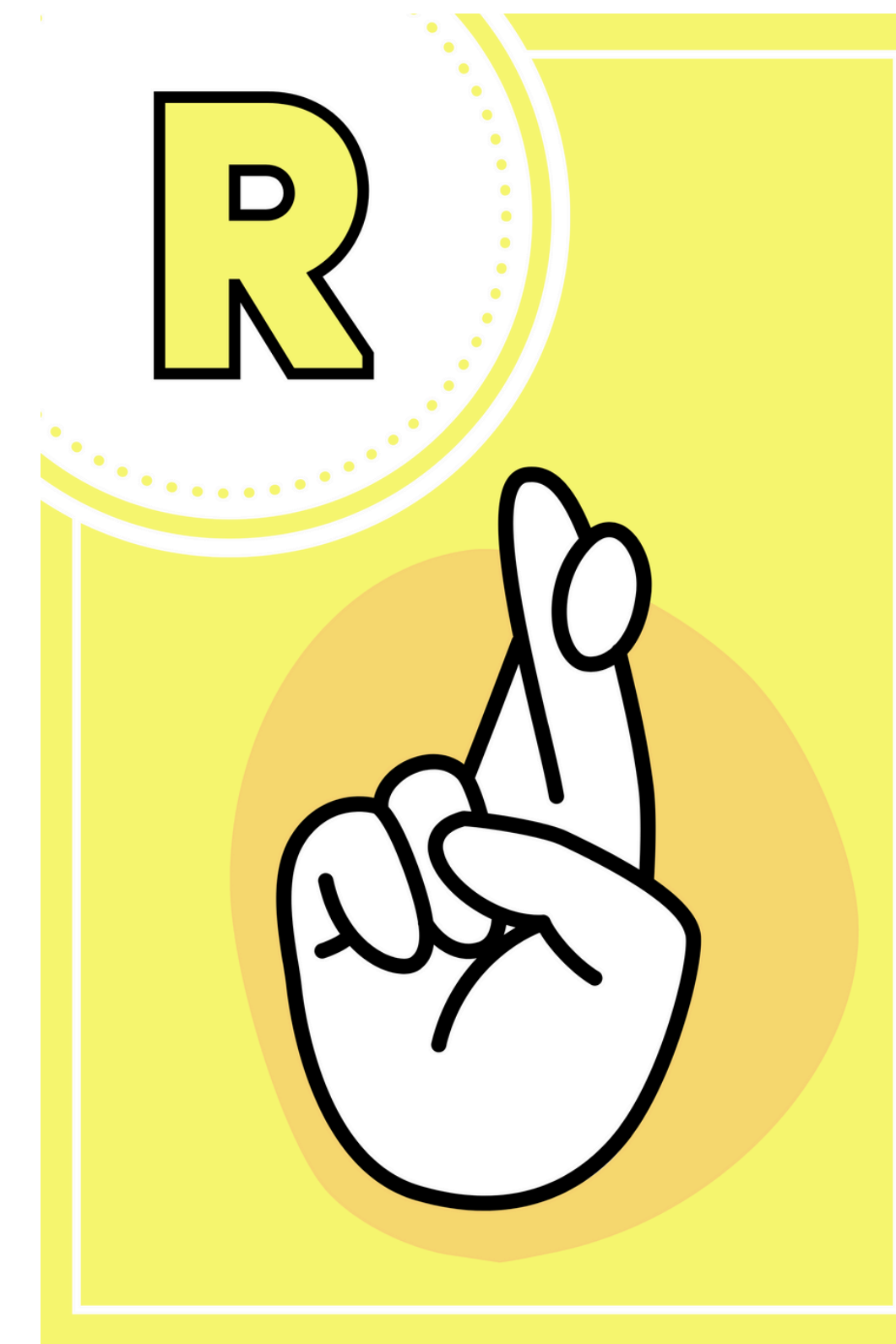
ASL20



ASL21



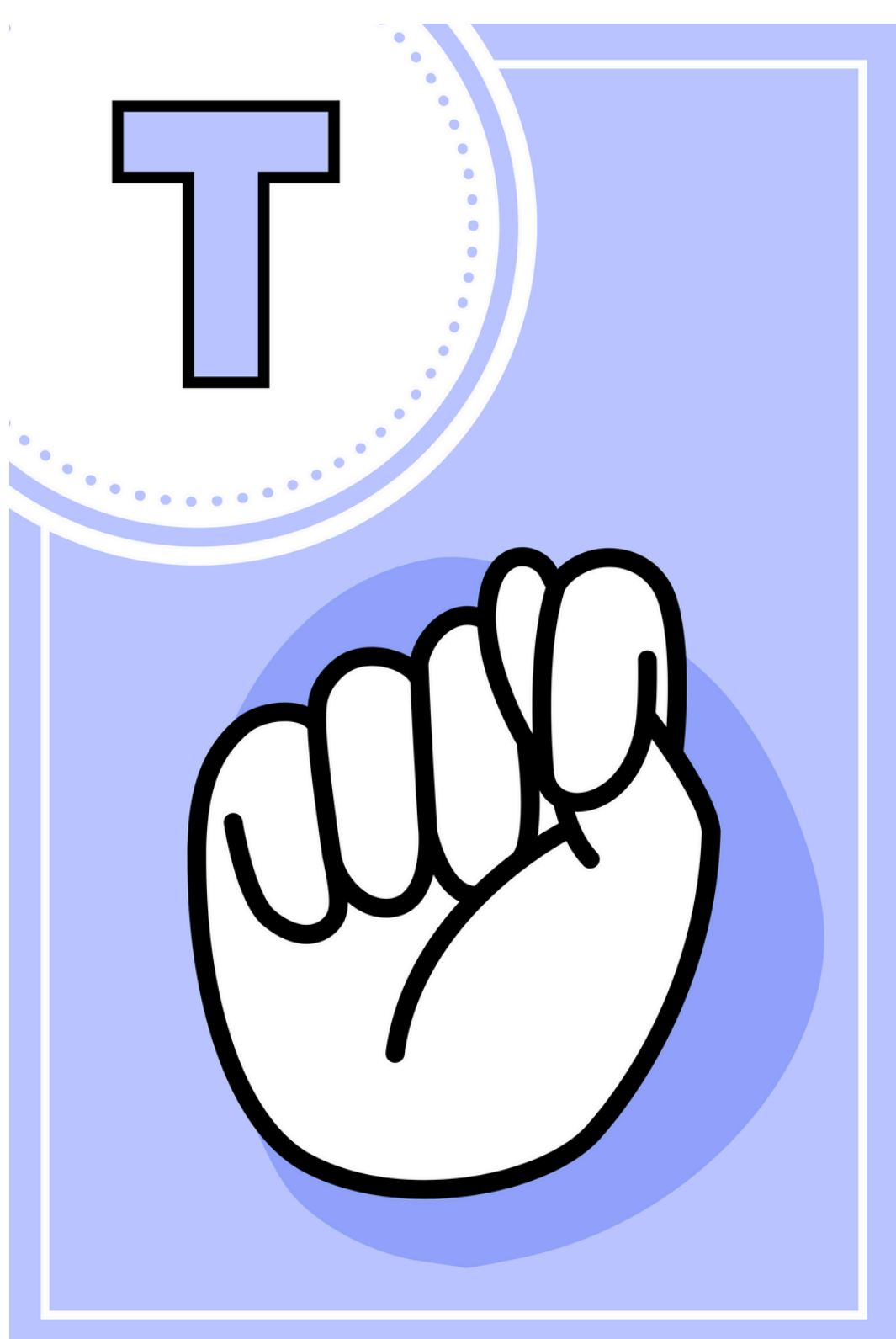
ASL22



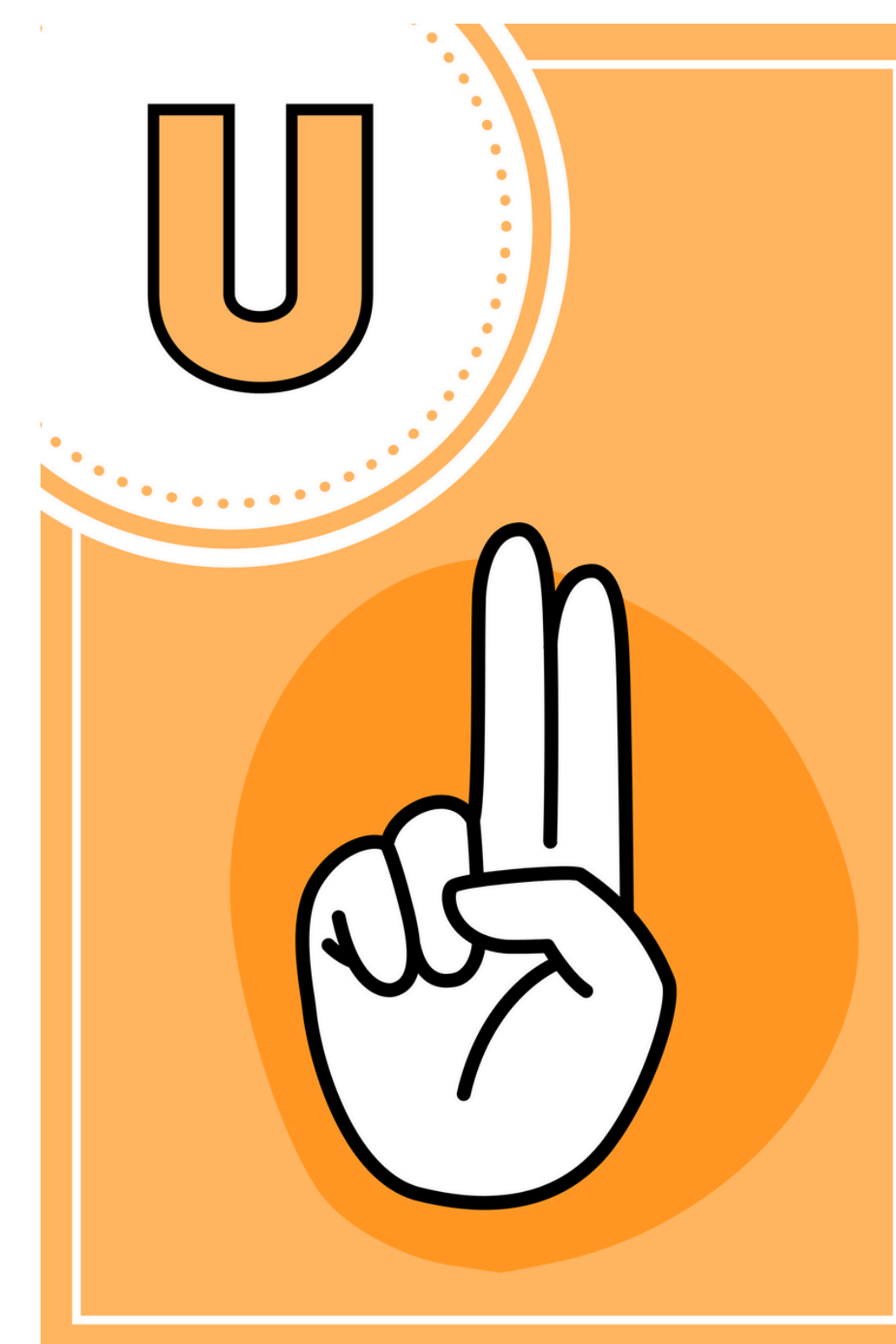
ASL23



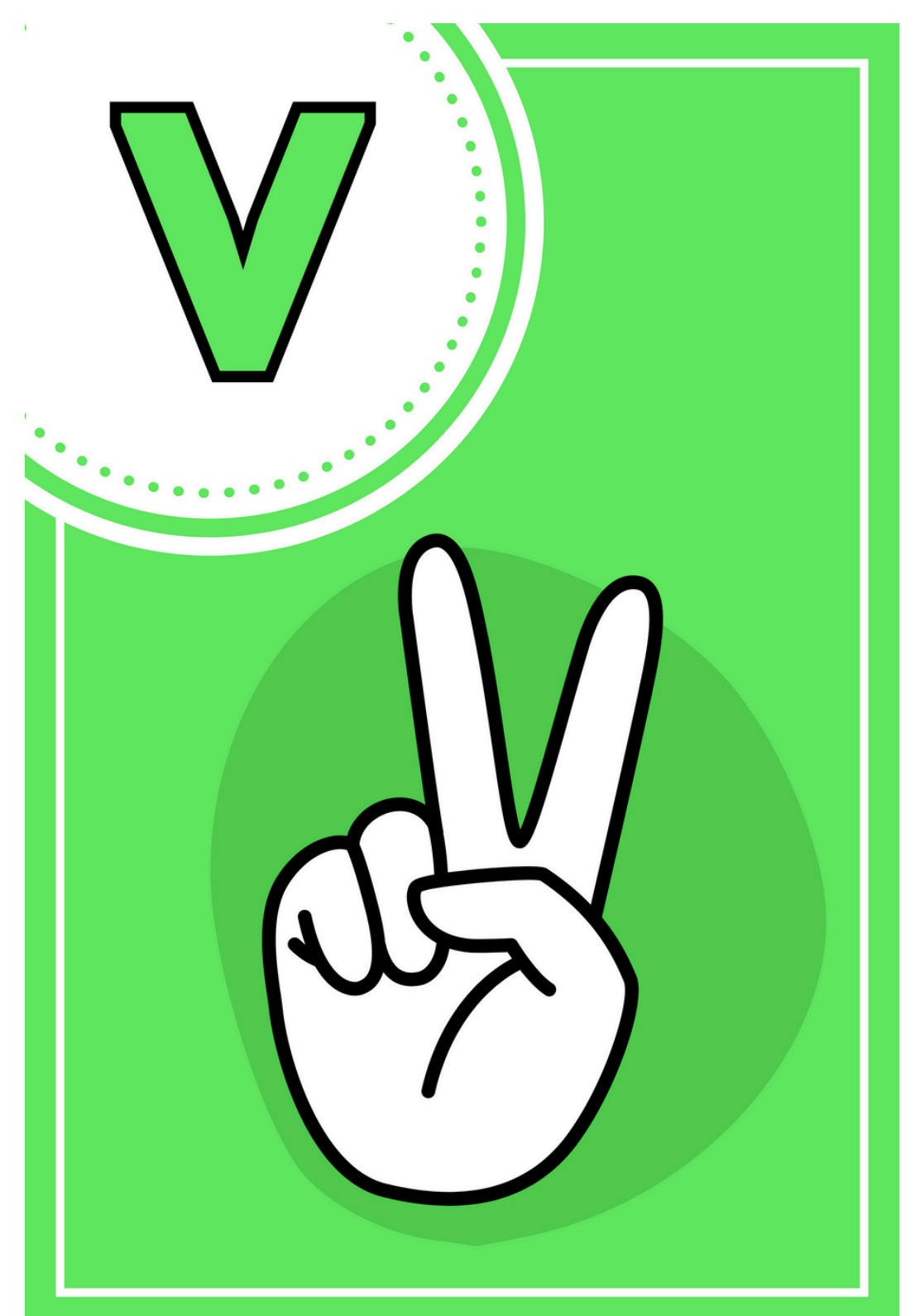
ASL24



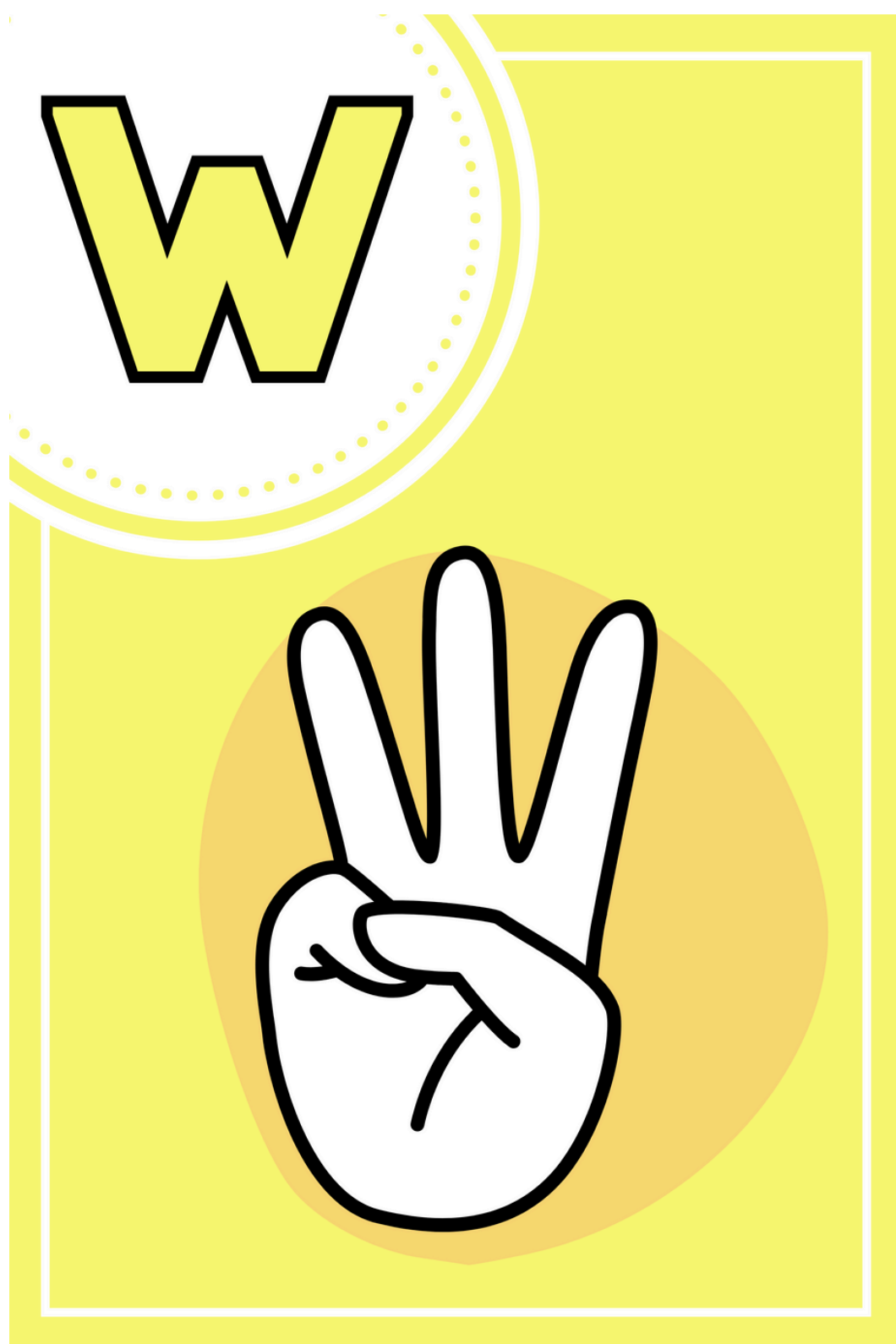
ASL25



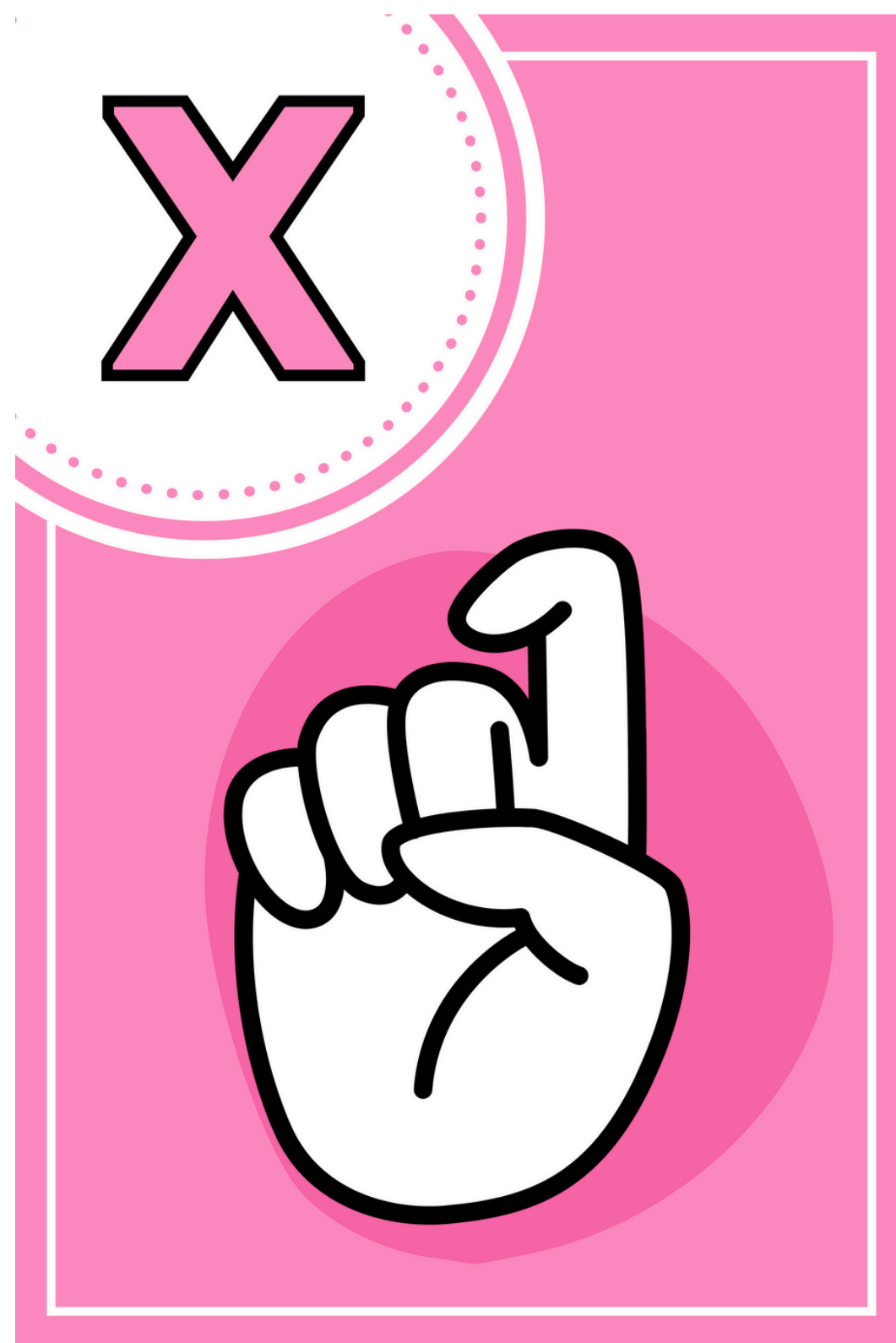
ASL26



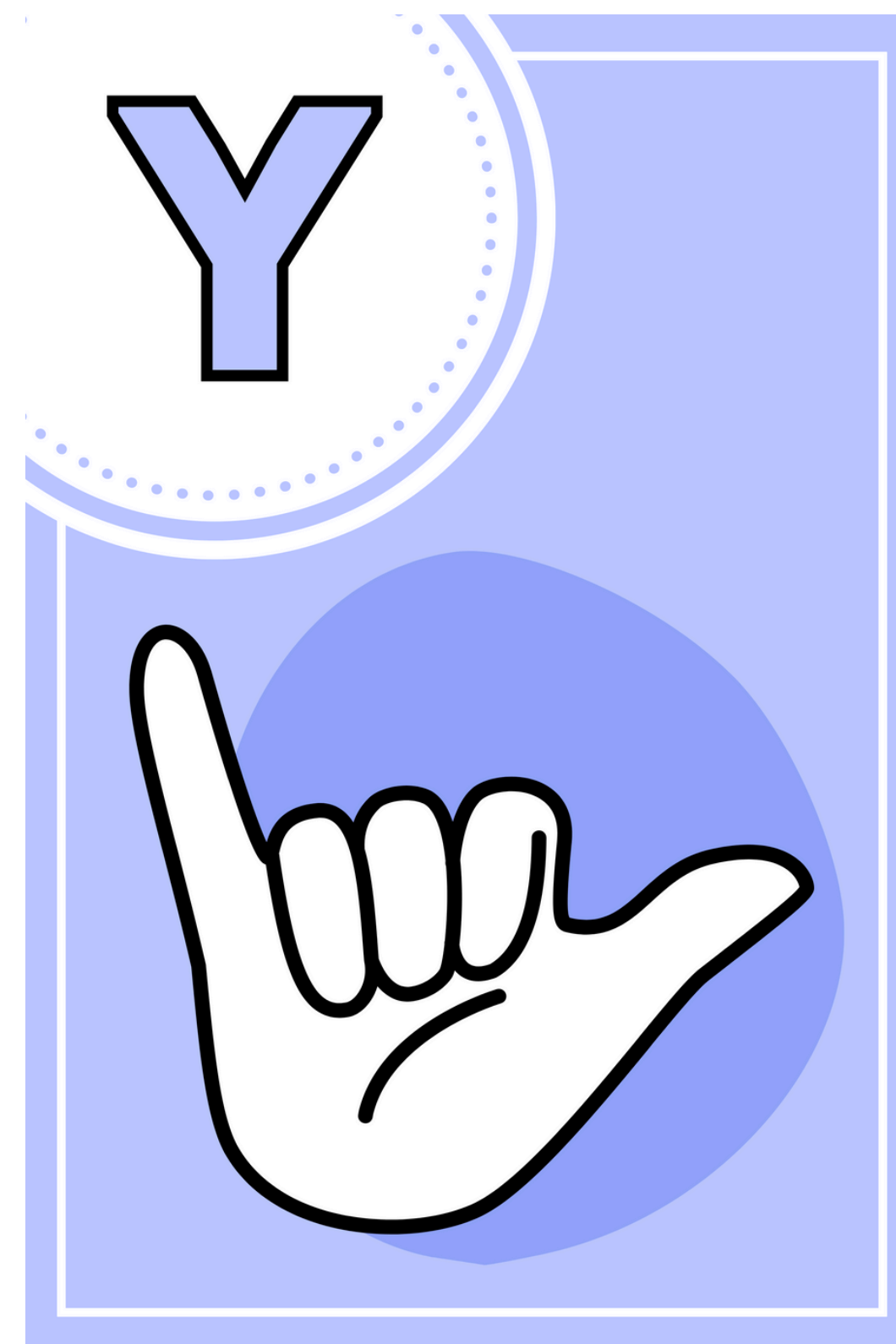
ASL27



ASL28



ASL29



ASL30



ASL31